

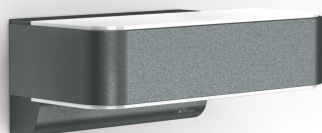
Sensor-switched LED outdoor light

L 810 SC

Anthracite

EAN 4007841 065706

Article number 065706



Up-/Downlight

LED

30 years (0 4,5h / day)

3000 K

3000K warm-white



intelligent high frequency sensor 160°



1 - 5 m



IP44



2 - 2000 lux



Light source not exchangeable



Control gear not exchangeable



5 sec - 60 min

Function description

The most modern outdoor light in the world. Designer sensor-switched outdoor light L 810 SC with invisible high-frequency sensor, ideal for building entrances and fronts of buildings, 9,8 W STEINEL LED lighting system, 679 lm, 160° coverage angle, reach from 1 - 5 m, for stylish up and downlighting, includes soft light start and optional manual override for 4 hours. Wirelessly interconnectable by Bluetooth and adjustable and controllable via free app.

Technical specifications

Dimensions (L x W x H)	146 x 230 x 91 mm	Photo-cell controller	Yes
With lamp	Yes, STEINEL LED system	Transmitter range	30 m
Manufacturer's Warranty	3 years	Transmitter power	< 1 mW
Settings via	App, Connect Bluetooth Mesh	Luminous flux total product	679 lm
With remote control	No	Measured luminous flux (360°)	679 lm
Version	Anthracite	Total product efficiency	69 lm/W
PU1, EAN	4007841065706	Colour temperature	3000 K
Application, place	Outdoors	Lamp	LED cannot be replaced
Application, room	garden, front door, courtyard & driveway, all round the building, terrace / balcony	Service life LED L70B50 (25°)	> 60000 h
Colour	Anthracite	Base	without
includes sheet of self-adhesive numbers	No	LED cooling system	Active and Passive Thermo Control
Installation site	wall	Soft light start	Yes
Impact resistance	IK03	Continuous light	selectable
IP-rating	IP44	Functions	Motions sensor
Protection class	II	Twilight setting	2 – 2000 lx
		Time setting	5 s – 60 Min.
		Basic light level function	Yes

<https://www.steinel.de>

Subject to technical modifications

05.2025 Page 1 from 3

L 810 SC

Anthracite
 EAN 4007841 065706
 Article number 065706



Technical specifications

Ambient temperature	from -20 up to 40 °C	Basic light level function time	OFF, Brightness-controlled, 10 sec - 60 min
Housing material	Aluminium	Main light adjustable	0 - 100 %
Cover material	Plastic, opal	Interconnection	Yes
Mains power supply	220 – 240 V / 50 – 60 Hz	Type of interconnection	Master/master, Master/slave
Output	9,8 W	Basic light level function in per cent	10 – 100 %
Mounting height max.	2,50 m	Basic light level function percentage, from	10 %
Slave modeselectable	Yes	Basic light level function percentage, up to	100 %
Sneak-by guard	No	Interconnection via	Bluetooth Mesh
Capability of masking out individual segments	No	Colour Rendering Index CRI	= 82
Electronic scalability	Yes	Optimum mounting height	2 m
Mechanical scalability	No	Detection angle	160 °
Reach, detail	Detection zone adjustable on 2 axes	Product category	Sensor-switched LED outdoor light
Reach, radial	r = 5 m (35 m ²)		
Reach, tangential	r = 5 m (35 m ²)		

Accessories

EAN 4007841 088620

Wireless pushbutton TapDuo C

Sensor-switched LED outdoor light

L 810 SC

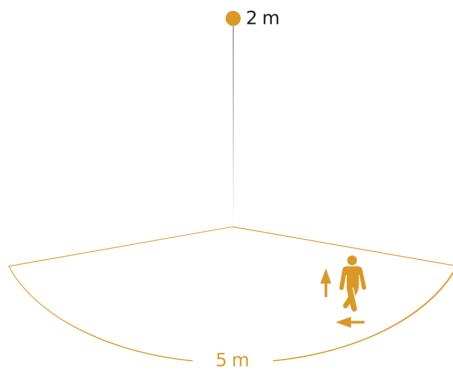
Anthracite

EAN 4007841 065706

Article number 065706

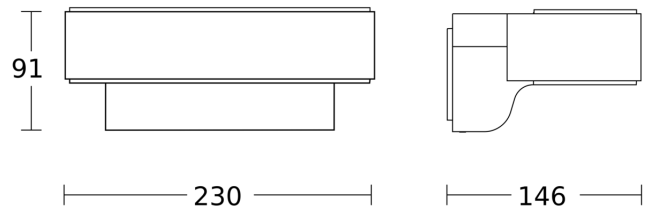


Detection Zone



Possible mounting height: 1,80 m - 2,50 m
Orange: radial and tangential

Dimension Drawing



Circuit diagram Bluetooth

